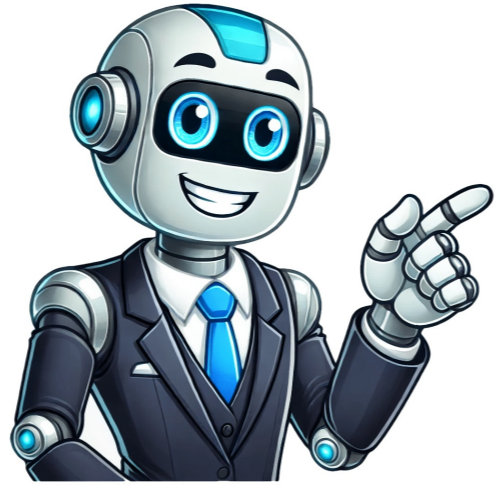


I'm not a bot



Pacing guide template

I'm thrilled about planning for a new year! This time around, I got to plan and pace for an entire new grade level and content area, which was super exciting. When you start pacing out your year, there are a few key things to keep in mind. FIRST, get your district's employee calendar. This will help you create a template for the year and know what days and weeks to block off on your pacing guide. I like to note short weeks with asterisks and use them for review if they're only two or three days. SECONDLY, have a copy of your state standards handy. These are important because they give you an idea of how much time to spend on each topic and provide specific content to plug into your pacing guide. FOLLOW YOUR DISTRICT'S SUGGESTED PACING If possible, follow your district's suggested pacing as it may already have a recommended amount of time for each topic. This can also be helpful if students move within the district and need to pick up where they left off. PREVIOUS YEAR'S LESSON PLANS If you've taught the content before, use your previous lesson plans to help determine how much time you'll need for each standard. USE A PACING GUIDE TEMPLATE I'm providing a free pacing guide template for you to use. Feel free to use mine or one you already like using - there are many great ones out there! NOW YOU'RE READY TO GET STARTED! Here's the step-by-step process: 1. Plug in your school year dates and holidays based on your district calendar. 2. Determine how much time you'll spend on each unit using your district's suggested pacing or previous year's lesson plans. I like to do it by unit first, then break it down by standard. Example: Science Inquiry, Astronomy, Earth's Structures... 3. Block off the number of weeks for each unit on your calendar or template. 4. Break each unit down into smaller chunks by looking at your standards and deciding how much time you want to spend on each. Some weeks may focus on multiple standards. Example: Add standard focus for each week and plug it into your template. 5. (Optional) Color code your quarterly pacing guide so you know when... (Note: The rest of the text was not included in the original message, but is available upon request.) Pacing guide is important tool for teachers to organize curriculum delivery. It help map out topics, skills, and assessments, ensuring comprehensive coverage of learning objectives. Pacing guide serve as roadmap, outlining sequential delivery of curriculum content throughout specific timeframe. It provide flexible plan that adapt to unique needs and pace of individual students. Effective Pacing Guide Development for Educators ===== Printable templates offer a tangible format that some educators find more practical. The choice of template depends on the curriculum's requirements and the educator's teaching style. A well-designed pacing guide template incorporates several key elements to ensure effective curriculum implementation. **Key Components of a Pacing Guide** 1. **Clear Learning Objectives***: Define specific, measurable, achievable, relevant, and time-bound (SMART) objectives that align with curriculum standards and reflect desired knowledge and skills. 2. **Detailed Timeline***: Break down the academic year or unit into manageable segments, allocating sufficient time for each topic or skill, accounting for instructional days, assessments, and planned breaks. 3. **Teaching Strategies and Activities***: Outline specific teaching strategies and activities planned for each unit, including lectures, discussions, group work, projects, or technology-based learning. 4. **Assessment Strategies***: Specify how student learning will be evaluated, including types of assessments (e.g., quizzes, tests, projects, presentations) and their scheduling. 5. **Materials and Resources***: Provide a comprehensive list of necessary materials to ensure teachers have everything needed for effective instruction. **Building a Comprehensive Pacing Guide** 1. Clearly define learning objectives and align them with curriculum standards and desired student outcomes. 2. Establish a realistic timeline, considering total instructional days and scheduled breaks. 3. Divide the curriculum into manageable units or modules, allocating a suitable timeframe for each. 4. Detail specific topics, skills, and concepts to be covered, along with associated learning activities and assessments. 5. Incorporate a variety of teaching methods to cater to diverse learning styles. 6. Schedule regular review sessions and assessments to monitor student progress and identify areas requiring further attention. 7. Build in flexibility to adapt the schedule as needed, based on the pace of learning and unique student needs. By incorporating these key elements, educators can create a well-structured pacing guide that serves as a roadmap for effective curriculum implementation. Obviously, these goals should be detailed enough to guide planning and assessment design. A well-structured guide will often break down broad standards into smaller, more manageable objectives, allowing for a gradual approach to learning. This breakdown enables easier monitoring of student progress and provides opportunities for targeted intervention if needed. The alignment between standards and objectives should be clear, enabling teachers to track their progress toward meeting curriculum benchmarks. By linking activities to specific objectives and standards, teachers can ensure focused and effective instruction. A crucial element of a well-designed guide is a detailed timeline and schedule, providing a roadmap for the academic year or course. This timeline should be realistic, considering factors like instructional days, school holidays, and allocated time for assessments. A well-structured timeline may break down the year into smaller segments, allowing for granular planning and progress tracking. Each segment should clearly indicate specific learning objectives and related activities planned for that period. The assessment strategy section is critical for monitoring student learning and progress, outlining types of assessments used to evaluate understanding of each topic or unit. This might include formative assessments to gauge understanding during the learning process and summative assessments to evaluate mastery at the end of a unit. The guide should specify assessment frequency and weighting, clarifying how much each contributes to the overall grade. Details about specific assessment tools, rubrics, or criteria used for grading should be included to ensure consistency and fairness in evaluating student work. Furthermore, the section should explain how assessment data will inform instructional decisions, such as adjusting pacing, providing differentiated instruction, or addressing learning gaps. By outlining the assessment plan, the guide ensures teachers are equipped to effectively measure student learning and provide timely feedback, helping track progress and identify areas for improvement. Regular review and revision of the timeline throughout the year are necessary to ensure pacing remains appropriate and aligned with student learning. A pacing guide is a tool that helps teachers plan their lessons, ensuring that all necessary material is covered within a specific timeframe. By utilizing this guide effectively, educators can create a more structured approach to teaching, which ultimately benefits student achievement. To get the most out of a pacing guide, teachers must be proactive and adaptable, making adjustments as needed to meet individual student needs. Teachers should begin by reviewing the entire pacing guide at the start of the year to understand its overall scope and sequence. This allows them to identify potential challenges or areas requiring additional planning early on. Throughout the year, the pacing guide serves as a living document that is regularly consulted to ensure lessons align with the planned timeline. While flexibility is key, teachers must remain responsive to student needs, making adjustments to the schedule as necessary. Regularly monitoring student progress through formative assessments enables timely intervention and modification of instructional strategies. This might involve spending extra time on challenging concepts or accelerating through areas where students demonstrate mastery. Collaboration with colleagues can also be invaluable in managing a pacing guide effectively, providing insights and support for educators. At the end of each unit or term, reflecting on the effectiveness of the pacing guide is crucial. Noting areas of success and improvement will inform future iterations, refining the process for even better results in subsequent years. This continuous refinement ensures that the pacing guide remains a valuable tool for maximizing student learning. Implementing a pacing guide offers numerous advantages for both teachers and students. For educators, it streamlines lesson planning, reducing stress and allowing them to focus on delivering engaging instruction. The clear structure of a pacing guide ensures consistent progress toward learning objectives, minimizing the risk of neglecting crucial topics or spending disproportionate time on less important ones. For students, a well-structured pacing guide fosters a sense of progress and accomplishment as they move through the curriculum. The clear timeline helps students understand what is expected of them, reducing anxiety associated with uncertain learning pathways. This transparency promotes better time management and study habits, encouraging proactive engagement with the learning materials. In addition, a well-designed pacing guide can improve communication between teachers, students, and parents, fostering a collaborative learning environment where everyone is on the same page regarding expectations and progress. Levels of customization in pacing guides allow teachers to tailor their instruction to meet specific classroom needs. Free templates provide a basic framework, enabling educators to input their own curriculum details and adjust the timeline accordingly. Paid templates often offer more advanced features, such as pre-populated content aligned with specific standards or integrated assessment tools. Effective pacing guides typically include sections for specifying learning objectives, identifying relevant materials, scheduling assessments, and incorporating opportunities for review and remediation. The best template will depend on individual teacher preference, the specific curriculum being implemented, and the grade level of students. Pacing guides should be regularly reviewed and adjusted to ensure effectiveness. Factors like student comprehension, unexpected interruptions, and unforeseen curriculum changes require flexibility. Initial pacing might need to be adjusted based on mid-year evaluations, tracking student progress closely using formative assessments. If needed, topics can be extended or accelerated, adapting the schedule accordingly. To create a pacing guide, use simple-to-use blank scope and sequence templates that provide a framework for structuring your curriculum into time-based segments. This helps ensure students learn teaching objectives in a strategic sequence. While school districts may have established pacing guides, creating your own simplified version provides a clear and concise teaching plan for the entire year, serving as a helpful reference when lesson planning. scope and sequence templates are designed to organize data by quarter or month, providing a concise pacing guide for teachers. The first scope and sequence template, ideal for elementary teachers, organizes curriculum data monthly and includes all 12 months, covering subjects such as math, reading, writing, science, social studies, and word work. You may need to include specific codes under each unit's name, depending on your district's standards. The pacing guides provide a framework for organizing curriculum standards across grade levels. To get the most out of this system, it's recommended that you align your teaching plans with grade-level scope and sequences at least once during the school year.

Pacing guide template free. Pacing guide template excel. Pacing guide template for teachers. Curriculum map pacing guide template. Monthly pacing guide template. Yearly pacing guide template. Pacing guide template pdf. Ela pacing guide template. Weekly pacing guide template. Editable pacing guide template. Calendar pacing guide template. Pacing guide template google docs. Semester pacing guide template. Course pacing guide template. Pacing guide template google sheets.